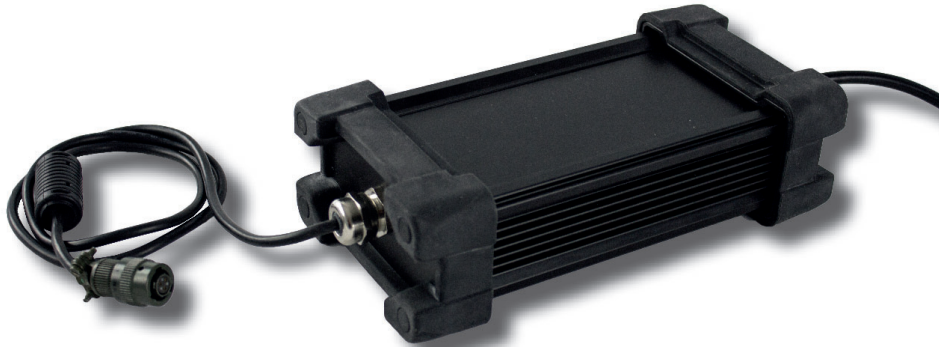


# AC/DC-Adapter

IP65

AC90  
power supply



## Technical Specification

<b>Input Voltage</b>	100 - 240 V <sub>AC</sub>
<b>Frequency</b>	50 - 400 Hz
<b>Input Current</b>	1.2 A
<b>Output Voltage</b>	19 V <sub>DC</sub>
<b>Output Current</b>	4.74 A
<b>Total Power</b>	90 W
<b>Connector Type (DC)</b>	3-pol. MIL, fixed cable ca. 0.9m, (Amphenol 62IN-56T8-33S-622-RH)
<b>Connector Type (AC)</b>	EU, UK, US as standard, fixed cable ca. 1.5 m • others or open end on request
<b>Compatibility</b>	suitable for all roda products with 3 pol. MIL DC connector: • Rocky® RT8/RK8/RF8, RT9/RK9/RF9, RK10/RF10, RK12 • Panther DR8/DK8, DR10/DK10 • Lizard® RS11/RV11
<b>Ingress Protection</b>	IP65
<b>Temperature</b>	-30°C to +50°C (operating) / -30°C to +80°C (storage)
<b>Dimensions</b>	ca. 280 x 115 x 64 x mm (L x W x H) without cable
<b>Weight</b>	ca. 1.5 kg
<b>Option</b>	• Explosive Atmosphere according to MIL-STD-810G, Method 511 • MIL-STD 461F Ground Army • TEMPEST Zone 1 / SDIP 27 Level B (ER)

Part no.	Description
759038	Rx/Dx AC-Adapter 90W, MIL - IP65
759039	Rx/Dx AC-Adapter 90W, MIL, G.A. - IP65
759040	Rx/Dx AC-Adapter 90W, MIL (G.A.), Zone 1 - IP65



Landstraße 6  
77839 Lichtenau, Germany  
www.roda-computer.com

Tel.: +49 (0) 72 27 / 95 79 - 0  
Fax: +49 (0) 72 27 / 95 79 - 20  
mail@roda-computer.com

roda computer GmbH reserves the right to update the information at any time without notice

**roda**  
solid IT-solutions