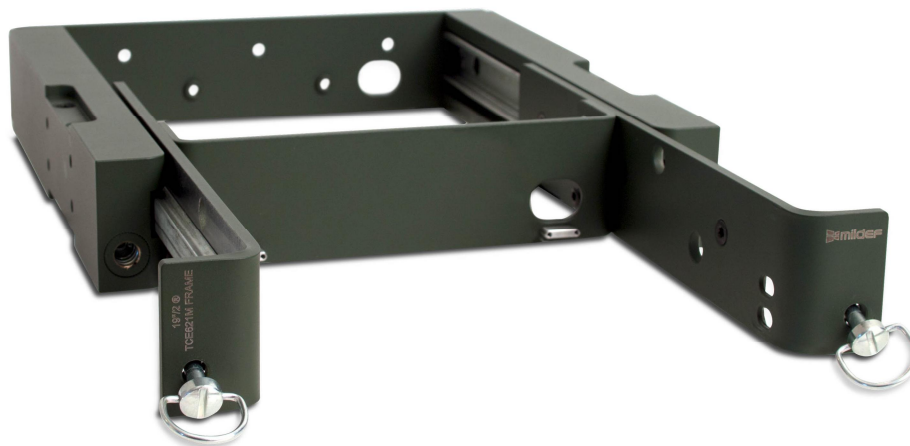


19"/2[®] TCE621M THALES Frame



The 19"/2[®] TCE621M THALES Frame is built specifically for the fitting of a Thales TCE621/M crypto into a 19"/2 setup. The frame enables easy mounting and dismounting of the TCE621/M unit as well as easy connection to any compatible devices.

Mounting

All 19"/2 units can be mounted together in several different ways

- One 19"/2 unit can be mounted in a 19" rack
- Two 19"/2 units can be mounted together in a 19" rack
- Two or more devices can also be stacked on top of each

Technical Specification		Designed to meet:		
Description		MIL-STD-810F	Operating	Storage
Description	A rugged mount for the Thales TCE621/M crypto designed specifically for the 19"/2	Altitude Method 500.4, (procedure II,III)	4572 m (15000 ft)	Rapid decompression 12180 m (40000 ft)
Interfaces (front)	Space to mount 1x Thales TCE621/M crypto	Humidity Method 507.4	Five 48 h test cycles	-
Frame	Aluminium	Shock Method 516.5, (procedure I, IV)	40 G, 11 ms (Terminal-peak saw tooth shock pulse)	122 cm (26 drops)*
Environmental specification		Salt fog Method 509.4, (Procedure I)	-	Salt concentration of 5% +/-1% (48 h wet +48 h dry/cycle)
Operating temperature	-40 °C to 55 °C	Temperature Method 501.4 & Method 502.4, (procedure I, II)	-40 °C to 55 °C (-40 °F to 131 °F)	-40 °C to 70 °C (-40 °F to 158 °F)
Storage temperature	-40 °C to 70 °C	Temperature shock Method 503.4 (procedure I)	-40 °C to +55 °C (-40 °F to +131 °F)	-
Certifications	Designed to meet MIL-STD-810F	Vibration Method 514.5		
		- Category 2	-	√
		- Category 14	√	-
		- Category 20 a & b	√	-

